



DAZSCOPE VIS

Chirpscan system Specifications

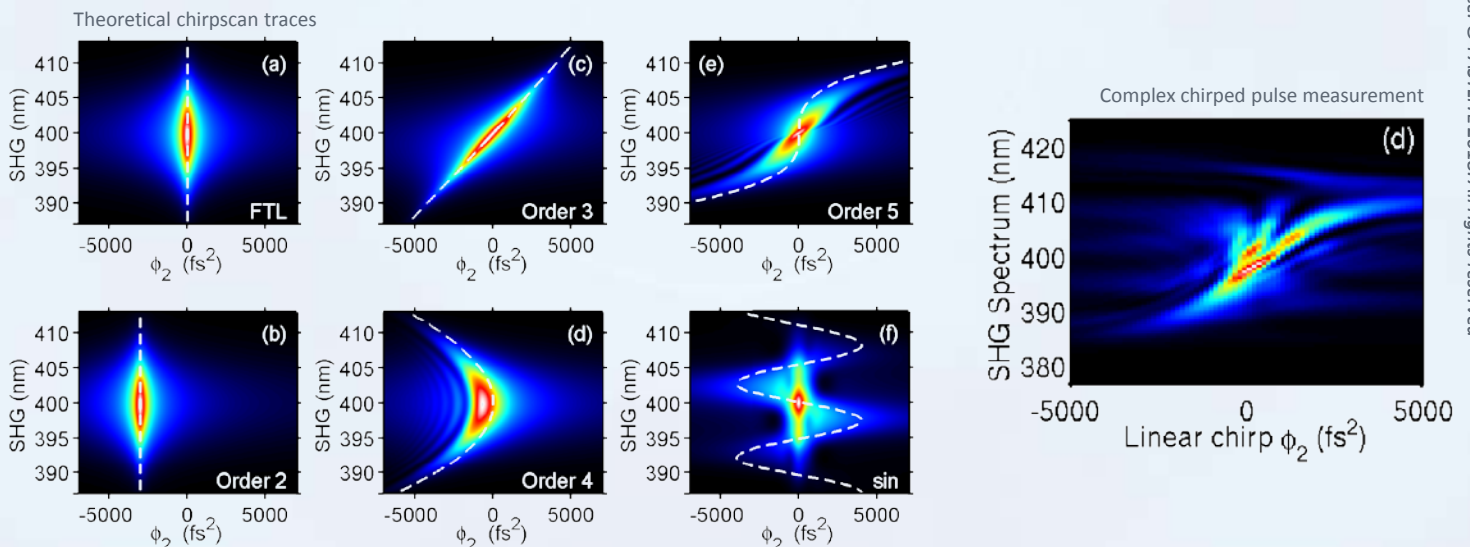
PULSE MEASUREMENT AND OPTIMIZATION SYSTEM

- ✓ In-line geometry
- ✓ Simple optical alignment
- ✓ Compatible with visible Dazzler pulse shapers

• Central wavelength tuning range*	500 – 700 nm
• spectral bandwidth FWHM*	10 – 24 nm
• Pulse duration range	30 – 200 fs
• Input peak intensity <ul style="list-style-type: none"> ○ kHz systems ○ <100Hz systems 	≈ 0.2 GW/cm ² ≈ 2 GW/cm ²
• Input polarization	Linear
• Optical module dimensions	200 x 70 x 30 mm3

* Custom wavelength and pulse durations available on request

✓ Intuitive traces for quick phase correction



Data from V.Loriot et al: "Self-referenced characterization of femtosecond laser pulses by chirpscan" Optics Express 2013